

HOW CAN WE HELP YOU?

HIT US ANYTIME AND WE'LL GET BACK TO YOU WITHIN ONE BUSINESS DAY!

1.866.874.8889
sales@novapole.com

VANCOUVER - BRITISH COLUMBIA
2579 188 St., Surrey, BC, V3Z 2A1
P: 604.881.0090 | F: 604.881.0008

EDMONTON - ALBERTA
#203 - 26229 Township Road,
531 A, Acheson, AB, T7X 5A4
P: 780.962.0010 | F: 780.962.9538

RENFREW - ONTARIO
64 Ma-te-way Park Drive,
Renfrew, ON, K7V 2L5
P: 613.431.7653 | F: 613.431.7655

NOVA  **POLE**

N O V A P O L E . C O M



DECORATIVE PRODUCTS

NOVA  **POLE**

Finish off your lighting project properly with high quality Nova Pole decorative products. Nova Pole has the capability to bring your outdoor pole projects to life with multiple standard options as well as custom tailored for your special projects. Give us a call to discuss your outdoor lighting requirements.



DECORATIVE BASES

Our cast bases are rigorously prepared before finishing. Nova Pole powder coating and custom paint finishes are available. Cast aluminum half shells bolted together with stainless steel hardware.

Chinatown

Two piece base

Material:	Cast Aluminum
Finishing:	Powder Coated
Part #:	101-04-4HAYB1-S
Height:	914mm 3' 0"
Bottom B.C.D.:	543mm 1' 9 3/8"
Top B.C.D.:	150mm 5 7/8"

Pole Cross Sections

The pole shaft can be tapered or straight with fluted section.





DBC Square

Two Piece Base

Material: Cast Aluminum
Finishing: Powder Coated

Type 4

Part #: 101-04-4NVAB4-F3
Height: 121mm 4 ¾"
Bottom A/F: 283mm 11 ⅛"
Top A/F: 105mm 4 ⅛"

Type 5

Part #: 101-04-4NVAB5-F3
Height: 121mm 4 ¾"
Bottom A/F: 311mm 12 ¼"
Top A/F: 130mm 5 ⅛"

Pole Cross Sections

The pole shaft can be tapered or straight with round section.



Small Domus

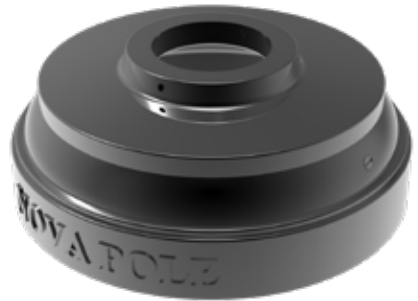
Two piece base

Material: Cast Aluminum
Finishing: Powder Coated

Part #: 101-04-4DOMB1-F
Height: 170mm 6 ⅞"
Bottom O.D.: 288mm 11 ⅝"
Top I.D.: 129mm 5 ⅛"

Pole Cross Sections

The pole shaft can be tapered or straight with round section.



DBC Round

Two Piece Base

Material: Cast Aluminum
Finishing: Powder Coated

Type 4

Part #: 101-04-4NVAB0-F3
Height: 140mm 5 ½"
Bottom O.D.: 360mm 1' 2 ¾"
Top I.D.: 105mm 4 ⅛"

Type 5

Part #: 101-04-4NVAB2-F3
Height: 140mm 5 ½"
Bottom O.D.: 360mm 1' 2 ¾"
Top I.D.: 130mm 5 ⅛"

Pole Cross Sections

The pole shaft can be tapered or straight with round section.



Franklin

Two Piece Base

Material: Cast Aluminum
Finishing: Powder Coated

Part #: 101-04-4FRAB1-F3
Height: 200mm 7 ⅞"
Bottom O.D.: 390mm 1' 3 ¾"
Top A/F: 219mm 8 ⅝"

Pole Cross Sections

The pole shaft can be tapered or straight with octagonal section.



DBC Square for Round Poles

Two Piece Base

Material: Cast Aluminum
Finishing: Powder Coated

Type 4

Part #: 101-04-4NVCB6-F3
Height: 125mm 5"
Bottom A/F: 312mm 12 ⅝"
Top I.D.: 105mm 4 ⅛"

Type 5

Part #: 101-04-4NVCB5-F3
Height: 125mm 5"
Bottom A/F: 311mm 12 ¼"
Top I.D.: 130mm 5 ⅛"

Pole Cross Sections

The pole shaft can be tapered or straight with round section.



Denman

Two piece base

Material: Cast Aluminum
Finishing: Powder Coated

Part #: 101-04-4DENB1-F3
Height: 256mm 10 ⅞"
Bottom O.D.: 755mm 2' 5 ¾"
Top I.D.: 316mm 12 ⅞"

Pole Cross Sections

The pole shaft can be tapered or straight with several section options.



Alder

Two Piece Base

Material: Cast Aluminum
Finishing: Powder Coated

Type 6

Part #: [101-04-4ALDB3-F3](#)
Height: 245mm 9 5/8"
Bottom O.D.: 402mm 1' 3 13/16"
Top I.D.: 171mm 6 3/4"

Type 8

Part #: [101-04-4ALDB4-F3](#)
Height: 270mm 10 5/8"
Bottom O.D.: 466mm 1' 6 3/8"
Top I.D.: 224mm 8 13/16"

Type 10

Part #: [101-04-4ALDB5-F3](#)
Height: 270mm 10 5/8"
Bottom O.D.: 466mm 1' 6 3/8"
Top I.D.: 277mm 10 7/8"

Pole Cross Sections

The pole shaft can be tapered or straight with several section options.



Fraser with Transition Adaptor (Step Pole)

Two Piece Base

Material: Cast Aluminum
Finishing: Powder Coated

Type 8

Part #: [101-04-4FSRB1-F3](#)
Height: 314mm 12 3/8"
Bottom A/F: 446mm 1' 5 9/16"
Top I.D.: 222mm 8 3/4"

Type 10

Part #: [101-04-4FSRB2-F3](#)
Height: 403mm 1' 3 7/8"
Bottom A/F: 560mm 1' 10 1/16"
Top I.D.: 275mm 10 13/16"

Pole Cross Sections

The pole shaft can be tapered or straight with round section.



Alder with Transition Adaptor (Step Pole)

Two Piece Base

Material: Cast Aluminum
Finishing: Powder Coated

Type 6

Part #: [101-04-4ALDB3-F3](#)
Height: 245mm 9 5/8"
Bottom O.D.: 402mm 1' 3 13/16"
Top I.D.: 171mm 6 3/4"

Type 8

Part #: [101-04-4ALDB4-F3](#)
Height: 270mm 10 5/8"
Bottom O.D.: 466mm 1' 6 3/8"
Top I.D.: 224mm 8 13/16"

Type 10

Part #: [101-04-4ALDB5-F3](#)
Height: 270mm 10 5/8"
Bottom O.D.: 466mm 1' 6 3/8"
Top I.D.: 277mm 10 7/8"

Pole Cross Sections

The pole shaft can be tapered or straight with round section.



Washington

Two Piece Base

Material: Cast Aluminum
Finishing: Powder Coated

Part #:

[101-04-4WSHB3-F3](#)
Height: 432mm 1' 5"
Bottom O.D.: 430mm 1' 4 15/16"
Top I.D.: 105mm 4 1/8"

NOTE: Also will accomodate 5" and 6" O.D. poles.

Pole Cross Sections

The pole shaft can be tapered or straight with several section options.



Henderson with Transition Adaptor (Step Pole)

Two Piece Base

Material: Cast Aluminum
Finishing: Powder Coated

Type 6

Part #: [101-04-4HENB1-F3](#)
Height: 310mm 12 3/16"
Bottom O.D.: 457mm 1' 6"
Top I.D.: 171mm 6 3/4"

Type 8

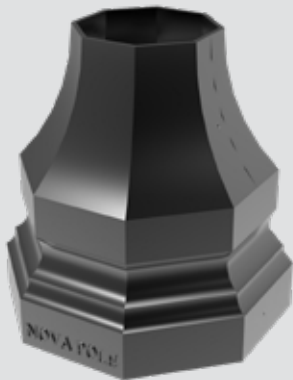
Part #: [101-04-4HENB2-F3](#)
Height: 305mm 12"
Bottom O.D.: 445mm 1' 5 1/2"
Top I.D.: 222mm 8 3/4"

Type 11

Part #: [101-04-4HENB3-F3](#)
Height: 305mm 1'
Bottom O.D.: 566mm 1' 10 5/16"
Top I.D.: 295mm 11 5/8"

Pole Cross Sections

The pole shaft can be tapered or straight with round section.



Morgan Creek

Two Piece Base

Material: Cast Aluminum
Finishing: Powder Coated

Small

Part #: [101-04-4MCRB1-F3](#)
Height: 455mm 1' 6"
Bottom A/F: 455mm 1' 6"
Top A/F: 206mm 8 1/8"

Large

Part #: [101-04-4MCRB2-F3](#)
Height: 643mm 2' 1 5/16"
Bottom A/F: 653mm 2' 1 11/16"
Top I.D.: 270mm 10 5/8"

Pole Cross Sections

The pole shaft can be tapered or straight with octagonal section.



Versa

Two Piece Base

Material: Cast Aluminum
Finishing: Powder Coated

Type 4

Part #: [101-04-4VRSB2-F3](#)
Height: 501mm 12' 7 3/4"
Bottom O.D.: 420mm 1' 4 5/16"
Top I.D.: 105mm 4 1/8"

Type 5

Part #: [101-04-4VRSB1-F3](#)
Height: 488mm 1' 7 3/16"
Bottom O.D.: 420mm 1' 4 5/16"
Top I.D.: 130mm 5 1/8"

Pole Cross Sections

The pole shaft can be tapered or straight with round section.



Matheson

Two Piece Base

Material: Cast Aluminum
Finishing: Powder Coated

Type 4

Part #: [101-04-4MATB2-F3](#)
Height: 673mm 2' 2 1/2"
Bottom O.D.: 406mm 1' 4"
Top I.D.: 105mm 5 1/8"

Type 5

Part #: [101-04-4MATB1-F3](#)
Height: 660mm 2' 2"
Bottom O.D.: 406mm 1' 4"
Top I.D.: 130mm 5 1/8"

Pole Cross Sections

The pole shaft can be tapered or straight with several section options.



Citadel

Two piece base

Material: Cast Aluminum
Finishing: Powder Coated

Part #: [101-04-4CITB1-F3](#)
Height: 520mm 1' 8 1/2"
Bottom O.D.: 500mm 1' 7 11/16"
Top I.D.: 172mm 6 3/4"

Pole Cross Sections

The pole shaft can be tapered or straight with round section.



Okanagan

Two Piece Base

Material: Cast Aluminum
Finishing: Powder Coated

Part #: [101-04-4OKAB1-F3](#)
Height: 675mm 2' 2 5/16"
Bottom O.D.: 580mm 1' 10 13/16"
Top I.D.: 222mm 8 3/4"

Pole Cross Sections

The pole shaft can be tapered or straight with several section options.



Olympus

Two Piece Base

Material: Cast Aluminum
Finishing: Powder Coated

Part #: [101-04-4OLYB1-F3](#)
Height: 630mm 2' 0 13/16"
Bottom O.D.: 500mm 1' 7 11/16"
Top I.D.: 172mm 6 3/4"

Pole Cross Sections

The pole shaft can be tapered or straight with several section options.



Athens

Two piece base, with access door

Material: Cast Aluminum
Finishing: Powder Coated

Part #: [101-04-4ATHB1-F3](#)
Height: 688mm 2' 3 1/16"
Bottom O.D.: 489mm 1' 7 1/4"
Top I.D.: 223mm 8 3/4"

Pole Cross Sections

The pole shaft can be tapered or straight with several section options.



Cypress

Two Piece Base

Material:	Cast Aluminum
Finishing:	Powder Coated
Part #:	103-04-4CYPB1-F3
Height:	699mm 2' 3 1/2"
Bottom O.D.:	406mm 1' 4"
Top I.D.:	130mm 5 1/8"

Pole Cross Sections

The pole shaft can be tapered or straight with round section.



Sechelt

Two Piece Base

Material:	Cast Aluminum
Finishing:	Powder Coated
Part #:	101-04-4SECB2-F3
Height:	768mm 2' 6 1/4"
Bottom O.D.:	370mm 1' 2 5/16"
Top I.D.:	129mm 5 1/16"

NOTE: Also will accomodate 4", 4.5" and 5.5" O.D. poles.

Pole Cross Sections

The pole shaft can be tapered or straight with round section.



Northwood

Two piece base

Material:	Cast Aluminum
Finishing:	Powder Coated
Part #:	101-04-4NWDB1-F
Height:	700mm 2' 3 5/16"
Bottom O.D.:	250mm 9 13/16"
Top I.D.:	78mm 3 1/16"

Pole Cross Sections

The pole shaft can be tapered or straight with round section.



Arles

Two piece base, with access door

Material:	Cast Aluminum
Finishing:	Powder Coated
Part #:	101-04-4ARLB1-F3
Height:	986mm 3' 2 13/16"
Bottom O.D.:	420mm 1' 4 5/16"
Top I.D.:	130mm 5 1/8"

NOTE: Will also accomodate 4" and 4.5" O.D. poles.

Pole Cross Sections

The pole shaft can be tapered or straight with round section.



Conflans

One piece structural base, with access door

Material:	Cast Aluminum
Finishing:	Powder Coated
Part #:	101-04-4CONB1-F3
Height:	762mm 2' 6"
Bottom A/F:	384mm 1' 3 1/8"
Top I.D.:	121mm 4 3/4"

NOTE: TOP I.D. represents the Outer Profile 4.75" Fluted Pole. Also available for 5" Round Pole.

Pole Cross Sections

The pole shaft can be tapered or straight with several section options.



Corona

Two piece base

Material:	Cast Aluminum
Finishing:	Powder Coated
Part #:	101-04-4CRNB1-F
Height:	784mm 2' 6 14/16"
Bottom O.D.:	588mm 1' 11 1/8"
Top I.D.:	222mm 8 5/8"

Pole Cross Sections

The pole shaft can be tapered or straight with round section.



Giverny

Two piece base, with access door

Material: Cast Aluminum
Finishing: Powder Coated
Part #: [101-04-4GIVB2-F3](#)
Height: 775mm 2' 6 1/2"
Bottom O.D.: 530mm 1' 8 7/8"
Top I.D.: 222mm 8 3/4"

Pole Cross Sections

The pole shaft can be tapered or straight with several section options.



Small Osceola

Two piece base

Material: Cast Aluminum
Finishing: Powder Coated
Part #: [101-04-4OSCB2-F](#)
Height: 820mm 2' 8 5/16"
Bottom O.D.: 444mm 1' 5 1/2"
Top I.D.: 206mm 8 1/8"

Pole Cross Sections

The pole shaft can be tapered or straight with round section.



Glenora

Two Piece Base

Material: Cast Aluminum
Finishing: Powder Coated
Part #: [101-04-4GLEB2-F3](#)
Height: 797mm 2' 7 3/8"
Bottom O.D.: 540mm 1' 9 1/4"
Top I.D.: 228mm 9"

Pole Cross Sections

The pole shaft can be tapered or straight with several section options.



Gastown

One piece structural base, with access door

Material: Cast Aluminum
Finishing: Powder Coated
Part #: [101-04-4GASB2-F3](#)
Height: 843mm 2' 9 3/16"
Bottom O.D.: 457mm 1' 6"
Top A/F: 172mm 6 3/4"

Pole Cross Sections

The pole shaft can be tapered or straight with octagonal section.



Vienna

Two Piece Base

Material: Cast Aluminum
Finishing: Powder Coated
Part #: [101-04-4NSRB1-F3](#)
Height: 817mm 2' 8 3/16"
Bottom O.D.: 395mm 1' 3 3/16"
Top I.D.: 105mm 4 1/8"

Pole Cross Sections

The pole shaft can be tapered or straight with round section.



Lion's Gate

Two piece base, with access door

Material: Cast Aluminum
Finishing: Powder Coated
Small
Part #: [101-04-4CASB1-F3](#)
Height: 883mm 2' 10 3/4"
Bottom A/F: 434mm 1' 5 1/16"
Top I.D.: 230mm 9 1/16"

Large

Part #: [101-04-4CASB2-F3](#)
Height: 915mm 3'
Bottom A/F: 553mm 1' 10 1/2"
Top I.D.: 316mm 12 7/16"

Pole Cross Sections

The pole shaft can be tapered or straight with several section options.



Sumter

Two piece base, with access door

Material:	Cast Aluminum
Finishing:	Powder Coated
Part #:	101-04-4SUMB1-F3
Height:	891mm 2' 11 1/16"
Bottom O.D.:	422mm 1' 4 5/8"
Top I.D.:	171mm 6 3/4"

Pole Cross Sections

The pole shaft can be tapered or straight with several section options.



Georgia

Two Piece Base

Material:	Cast Aluminum
Finishing:	Powder Coated

Small

Part #:	101-04-4GEOB1-F
Height:	915mm 3'
Bottom O.D.:	411mm 1' 4 3/16"
Top I.D.:	105mm 4 1/8"

Large

Part #:	101-04-4GEOB2-F
Height:	915mm 3'
Bottom O.D.:	640mm 2' 1 3/16"
Top I.D.:	286mm 11 1/4"

NOTE: Two piece base with access door

Pole Cross Sections

The pole shaft can be tapered or straight with round section.



Tallahassee

Two piece base, with access door

Material:	Cast Aluminum
Finishing:	Powder Coated
Part #:	101-04-4TALB1-F3
Height:	930mm 3' 0 5/8"
Bottom O.D.:	530mm 1' 8 7/8"
Top I.D.:	206mm 8 1/8"

Pole Cross Sections

The pole shaft can be tapered or straight with several section options.



Eagle Mountain

Two Piece Base

Material:	Cast Aluminum
Finishing:	Powder Coated

Part #:	101-04-4EMTB1-F3
Height:	940mm 3' 1"
Bottom A/F.:	393mm 1' 3 1/2"
Top A/F: Octagonal	165mm 6 1/2"
Top I.D.: Round	130mm 5 1/8"

Pole Cross Sections

The pole shaft can be tapered or straight with several section options.



Chinatown

Two piece base

Material:	Cast Aluminum
Finishing:	Powder Coated
Part #:	101-04-4CTNB1-F
Height:	914mm 3' 0"
Bottom B.C.D.:	543mm 1' 9 3/8"
Top B.C.D.:	152mm 6"

Pole Cross Sections

The pole shaft can be tapered or straight with fluted section.



Osyoos

Two piece base

Material:	Cast Aluminum
Finishing:	Powder Coated
Part #:	101-04-4OSYB1-F3
Height:	972mm 3' 2 1/4"
Bottom O.D.:	447mm 1' 5 5/8"
Top I.D.:	121mm 4 3/4"

Pole Cross Sections

The pole shaft can be tapered or straight with round sections.



Casino

Two Piece Base

Material: Fibre-reinforced Plastic
Finishing: Wet Painted
Part #: 101-04-4CSOB1-F4
Height: 998mm 3' 3 5/16"
Bottom O.D.: 515mm 1' 8 1/4"
Top A/F: 165mm 6 1/2"

Pole Cross Sections

The pole shaft can be tapered or straight with octagonal section.



Alberni

One piece structural base, with access door

Material: Cast Aluminum
Finishing: Powder Coated
Part #: 101-04-4ALBB1-F3
Height: 1083mm 3' 6 5/8"
Bottom A/F: 406mm 1' 4"
Top A/F: 143mm 5 5/8"

Pole Cross Sections

The pole shaft can be tapered or straight with several section options.



Haydock

Two piece base

Material: Cast Aluminum
Finishing: Powder Coated
Part #: 101-04-4HAYB1-S
Height: 1066mm 3' 6"
Bottom O.D.: 622mm 2' 1/2"
Top I.D.: 205mm 8 1/16"

Pole Cross Sections

The pole shaft can be tapered or straight with round section.



Lake Country

Two piece base

Material: Cast Aluminum
Finishing: Powder Coated
Part #: 101-04-4LKCB1-S
Height: 1244mm 4' 1"
Bottom O.D.: 356mm 14"
Top I.D.: 129mm 5 1/16"

Pole Cross Sections

The pole shaft can be tapered or straight with round section.



Seymour

Two Piece Base

Material: Cast Aluminum
Finishing: Powder Coated
Part #: 101-04-4SYMB1-F3
Height: 1070mm 3' 6 1/8"
Bottom O.D.: 426mm 1' 1 3/4"
Top I.D.: 144mm 5 1/16"

Pole Cross Sections

The pole shaft can be tapered or straight with round section.



Dundas

Two piece base, with access door

Material: Cast Aluminum
Finishing: Powder Coated
Type 4
Part #: 101-04-4DUNB2-F3
Height: 1418mm 4' 7 13/16"
Bottom O.D.: 508mm 1' 8"
Top I.D.: 197mm 7 3/4"

Type 5

Part #: 101-04-4DUNB0-F3
Height: 1614mm 5' 3 9/16"
Bottom O.D.: 575mm 1' 10 5/8"
Top I.D.: 276mm 10 7/8"

Pole Cross Sections

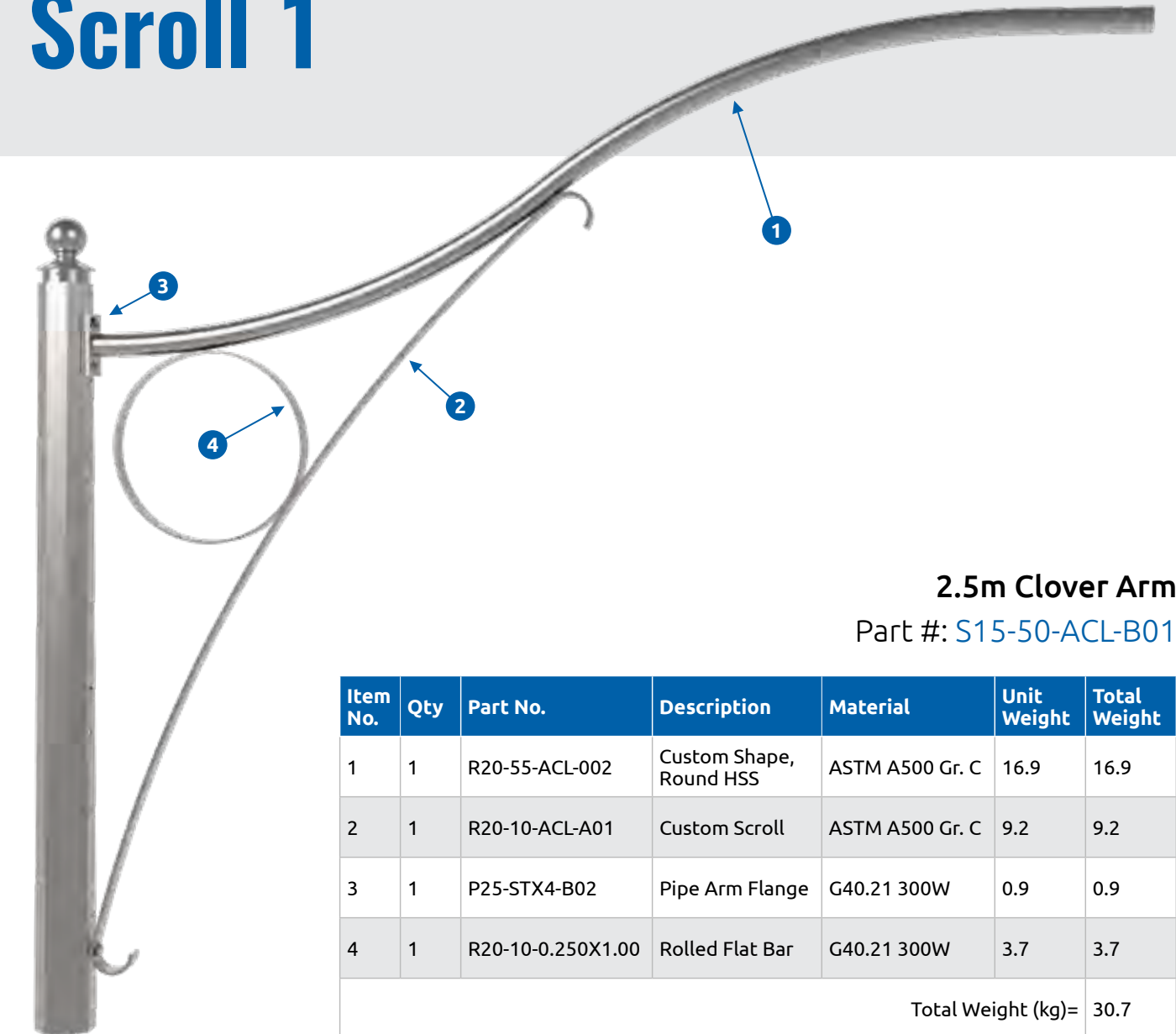
The pole shaft can be tapered or straight with several section options.

DECORATIVE BASE SIZE CHART



*Nova Pole International Inc.,
a privately owned company
incorporated in 1986, is a high
quality, cost effective volume
producer of infrastructure poles.*

Scroll 1



2.5m Clover Arm
Part #: [S15-50-ACL-B01](#)

Item No.	Qty	Part No.	Description	Material	Unit Weight	Total Weight
1	1	R20-55-ACL-002	Custom Shape, Round HSS	ASTM A500 Gr. C	16.9	16.9
2	1	R20-10-ACL-A01	Custom Scroll	ASTM A500 Gr. C	9.2	9.2
3	1	P25-STX4-B02	Pipe Arm Flange	G40.21 300W	0.9	0.9
4	1	R20-10-0.250X1.00	Rolled Flat Bar	G40.21 300W	3.7	3.7
Total Weight (kg)=						30.7

DECORATIVE ARMS

Our decorative arms are rigorously prepared before finishing. Nova Pole powder coating and custom paint finishes are available.

Bronte

Single Davit Fixture Arm
Part #: [S15-50-SAF-02](#)

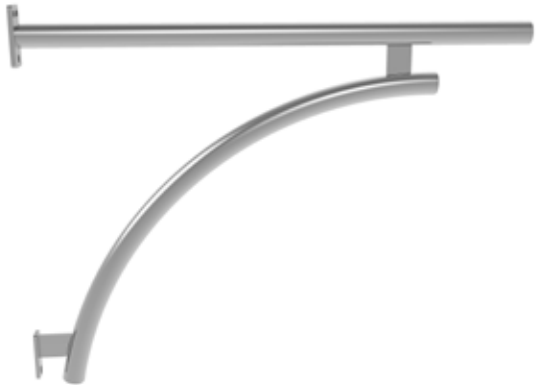
TOTAL WEIGHT (KG): 8.7



Heritage

1.3m Heritage Arm
Part #: [S15-40-13HR-001](#)

TOTAL WEIGHT (KG): 18.24



Burke

1.1m Clamp On Pedestrian Arm
Part #: [S15-50-COQ-E001](#)

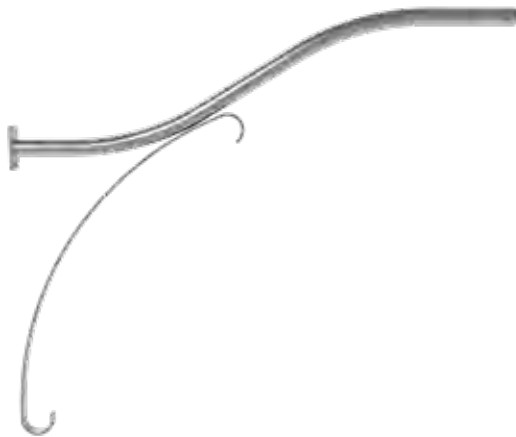
TOTAL WEIGHT (KG): 12.09



Hodgson

1.8m Hodgson Arm
Part #: [S15-40-18HD-001](#)

TOTAL WEIGHT (KG): 18.13



Gullwing

3.5m Single Davit Arm
Part #: [S15-50-DST-S01](#)

TOTAL WEIGHT (KG): 63.39



Kansas

Bracket Arm, Lighting Structure
Part #: [S15-50-KC-01](#)

TOTAL WEIGHT (KG): 16.54



Lima

8' Pipe Arm
Part #: [S15-50-Pip-A01](#)

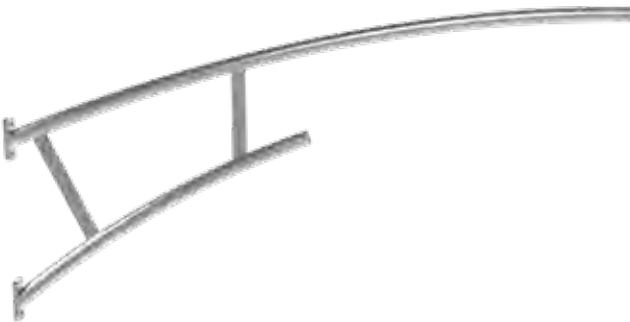
TOTAL WEIGHT (KG): 16.54



Newport

2.5m Newport Arm
Part #: [S15-40-25NT-001](#)

TOTAL WEIGHT (KG): 26.82



Long Bay

Lighting Fixture Arm
Part #: [S15-50-SIC-A001](#)

TOTAL WEIGHT (KG): 22.05



Ponderosa

24" Double Pipe Clamp On
Part #: [S15-50-PON-A001](#)

TOTAL WEIGHT (KG): 11.24



Marina

Lighting Fixture Arm
Part #: [S15-50-COQ-A001](#)

TOTAL WEIGHT (KG): 46.54



Riverside

1.178m Clamp On Pedestrian Arm
Part #: [S15-50-COQ-B001](#)

TOTAL WEIGHT (KG): 13.04



Scroll 1

2.5m Clover Arm
Part #: [S15-50-ACL-B01](#)

TOTAL WEIGHT (KG): 32.54



Shepherd 2

Aluminum Hook Arm
Part #: [S15-50-SHP-001](#)

TOTAL WEIGHT (KG): 5.2



Scroll 2

1.8m King Single Arm
Part #: [S15-50-SAL-S02-F](#)

TOTAL WEIGHT (KG): 7.32



Shepherd 3

Aluminum Single Hook Arm
Part #: [S15-50-ASH-S01](#)

TOTAL WEIGHT (KG): 12.09



Shepherd 1

Cast Aluminum Street Light Arm
Part #: [S15-50-SAL-A01](#)

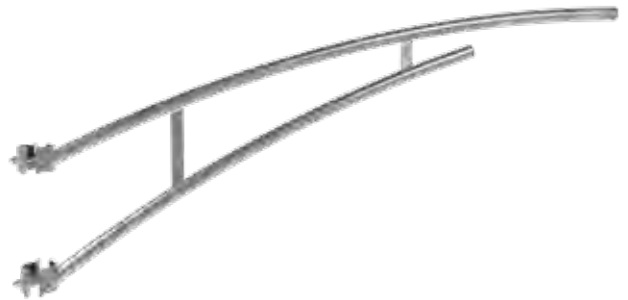
TOTAL WEIGHT (KG): 9.97



Truss 1

2.5m Single Davit Arm
Part #: [S15-50-SCK-001](#)

TOTAL WEIGHT (KG): 37.31



Truss 2

4m Single Davit Arm

Part #: [S15-50-SPM-A01-F1](#)

TOTAL WEIGHT (KG): 72.08



Vernon

36" Street Arm

Part #: [S15-40-36VED-001](#)

TOTAL WEIGHT (KG): 30.02



Westminster

Pedestrian Arm

Part #: [S15-55-CNW-A001](#)

TOTAL WEIGHT (KG): 7.21



Nova Pole International Inc. designs, manufacturers and markets tubular steel and aluminum poles for use in highway and street lighting, traffic signals, overhead traffic signage, electrical distribution and transmission towers, wireless communication towers, high mast and sport lighting poles, transit poles, solar lighting and wind tower poles, plus an extensive line of decorative streetscape lighting poles and bases.

DECORATIVE ACCESSORIES

Ball Finial



Ball Ribbed Cap



Banner Arm Ball



Golden Eagle Cap



Ribbed Cap



Spear Head Finial Cap



Dome Cap



Double Arm Finial



**Lion's Gate
Nut Cover Large**



**Lion's Gate
Nut Cover Small**



**Spear Head Finial
Double Arm**



Standard Nut Cover



ASSOCIATIONS AND SAFETY

Nova Pole is certified to the internationally recognized ISO 9001:2008 Quality Management Systems Standards, and to the very high standards of the Canadian Welding Bureau (CWB).

In addition, our products are certified to the Canadian Standards Association (CSA) and the company has achieved OQM Certification (Organizational Quality Management) by the Association of Professional Engineers and Geoscientists of BC. The company also designs and fabricates according to AASHTO standard specifications. With extensive state of the art manufacturing facilities in British Columbia, Alberta and Ontario, supported by a large department of highly qualified full time engineers on staff to provide detailed structural engineering design, the company is able to offer a full range of infrastructure needs, as well as custom designs.

