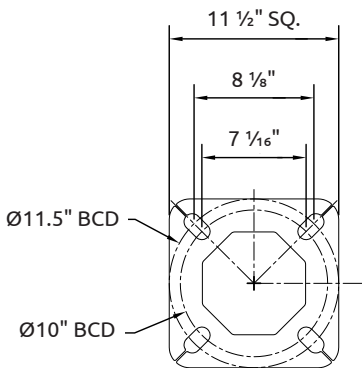
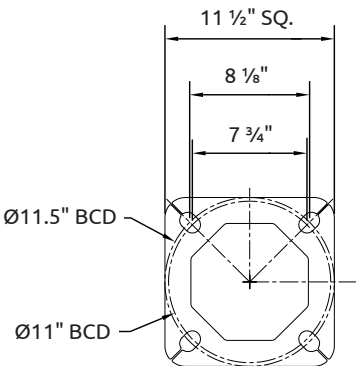


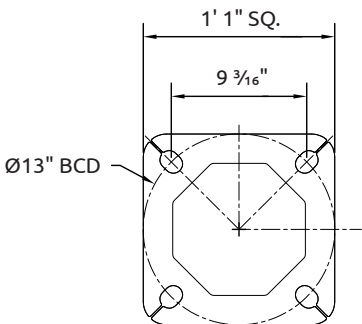
Hinged Poles



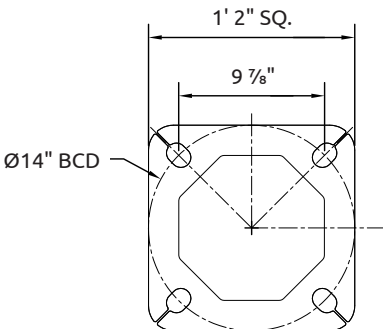
NOH Type A



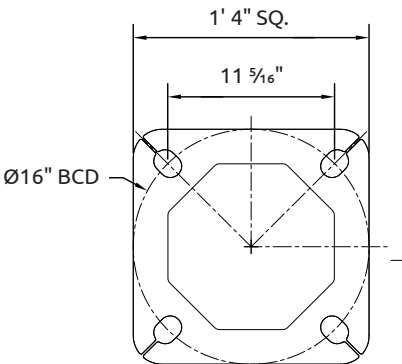
NOH Type B



NOH Type C



NOH Type D



NOH Type E



CATALOGUE #				FIXTURE INFO	
PROJECT NAME					
CITY					
PREPARED BY		DATE			
COMMENTS					
				QUANTITY	
				EPA (sq.ft.)	
				WEIGHT (lbs)	

Catalogue #	Pole Height (ft)	Pole Weight (lbs)	Anchor Bolt Size	Base Plate Type	Max. Weight at Top (lbs)	Maximum EPA (sq.ft.)			
						80MPH	90MPH	100MPH	110MPH
NOH20	20	245	1" x 36"	A	300	30.0	23.0	18.5	15.0
NOH25	25	315	1" x 36"	A	260	24.0	18.5	14.5	11.0
NOH30	30	420	1" x 36"	B	260	23.0	18.0	14.5	10.5
NOH35	35	590	1" x 36"	C	260	25.0	19.0	14.5	11.0
NOH40	40	775	1" x 36"	D	260	24.5	18.5	14.5	10.5
NOH50	50	1060	1" x 36"	E	235	20.5	14.5	11.0	6.5

- Hand hole ring mounting height is 12" to centre and comes with (4" x 7") hand hole cover
- Wind speeds (mph) in the table denote the maximum wind gust speed at the project site (i.e. gust factor included).
- Maximum EPA rating includes fixture(s) and supporting arm(s) and is for standard pole installation on concrete bases/footings.
- All poles are supplied with nut covers and shims.
- Pole designs based on AASHTO Standard Specifications for Structural Supports for Highway Signs, Luminaires, and Traffic Signals.
- Contact Sales Team for custom sizes and/or applications.
- Specific information and details may be subject to change without notice.
- Please see [Warranty](#) and [Terms & Conditions](#).