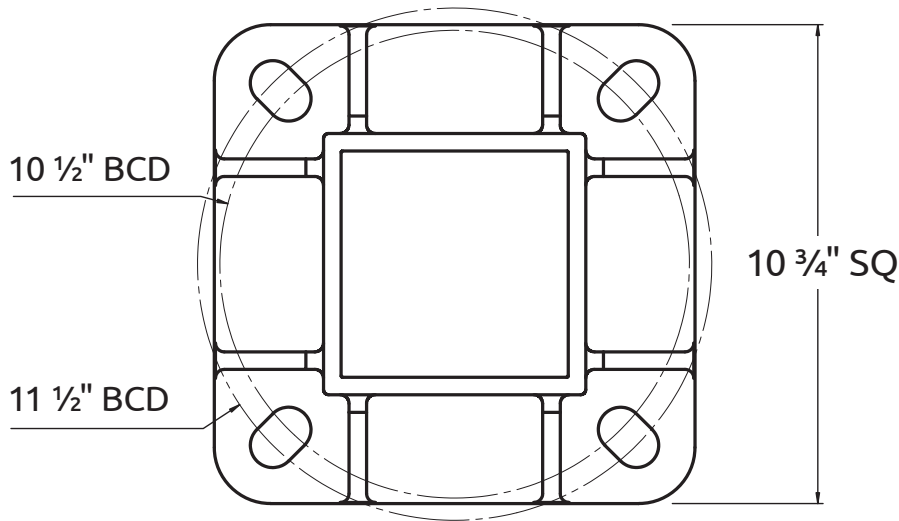


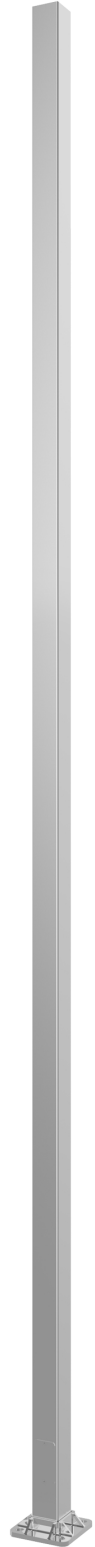
5" Straight Square Aluminum



NSSA Type B




(1" x 36" Anchor Bolts)

- If supplied, the festoon box is installed at 5m height. Notify Nova Pole if different mounting height is required.
- Hand hole ring mounting height is 12" to centre and comes with (4"x7") hand hole cover
- Wind speeds (mph) in the table denote the maximum wind gust speed at the project site (i.e. gust factor included).
- Maximum EPA rating includes fixture(s) and supporting arm(s) and is for standard pole installation on concrete bases/footings.
- All poles are supplied with nut covers, shims and top plastic cap.
- Pole designs based on AASHTO Standard Specifications for Structural Supports for Highway Signs, Luminaires, and Traffic Signals.
- Contact Sales Team for custom sizes and/or applications.
- Specific information and details may be subject to change without notice.
- Please see [Warranty](#) and [Terms & Conditions](#).



CATALOGUE #		FIXTURE INFO
PROJECT NAME		
CITY		
PREPARED BY	DATE	
COMMENTS		
		QUANTITY
		EPA (sq.ft.)
		WEIGHT (lbs)

Catalogue #	Pole Height (ft)	Pole Weight (lbs)	Pole Type	Anchor Bolt Size	Base Plate Type	Maximum EPA (sq.ft.)			
						80MPH	90MPH	100MPH	110MPH
NSSA518MD	18	85	MD	1" x 36"	B	12.7	9.0	6.4	4.4
NSSA520MD	20	93	MD	1" x 36"	B	10.5	7.1	4.7	2.9
NSSA525MD	25	115	MD	1" x 36"	B	5.6	3.0	1.0	-

Order Entry Info				
HEIGHT (ft)	MOUNTING TYPE (See Note 1)	FINISH TYPE	PC COLOUR	OPTIONS (Click descriptions to view product)
18 (MD)	 <p>TOP TENON MOUNT TT238 - 2 3/8" x 5" tenon TT278 - 2 7/8" x 5" tenon TT350 - 3 1/2" x 5" tenon</p>	<p>PC - Powder Coated</p> <p>NTPC - Nova Tuff Powder Coated (Colour Chart)</p>	<p>WHT - White (RAL-9003)</p> <p>BLK - Black (BK50)</p> <p>DBZ - Dark Bronze (RAL-8019)</p> <p>GRY - Grey (RAL-7040)</p> <p>GRN - Green (RAL-6005)</p> <p>CC - Custom Colour (RAL-) <i>(Additional charges may apply)</i></p> <p>BR - Brushed</p> <p>N - None</p> <p><i>For Nova Tuff, please provide RAL# under CC</i></p>	<p><input type="checkbox"/> DUPR - 1110 Box Provision (Festoon Box)</p> <p><input type="checkbox"/> DUPRGI - 1110 Box Provision c/w 15A 120V GFI Receptacle and Weatherproof Cover</p> <p><input type="checkbox"/> BCP - Type 4 Plastic Base Cover</p> <p><input type="checkbox"/> BCCS - Type 4 Cast Square Base Cover</p> <p><input type="checkbox"/> HHSS - Hand Hole Security System</p> <p><input type="checkbox"/> FBA1 - Flower Basket Arm One Side (<i>See Note 2</i>)</p> <p><input type="checkbox"/> FBA2 - Flower Basket Arm Dual (<i>See Note 2</i>)</p> <p><input type="checkbox"/> BA1 - Banner Arms One Side (<i>See Note 3</i>)</p> <p><input type="checkbox"/> BA2 - Banner Arms Dual (<i>See Note 3</i>)</p> <p><input type="checkbox"/> AB - Anchor Bolts</p> <p><input type="checkbox"/> BH - Bullhorns</p> <p><input type="checkbox"/> N - None</p>
20 (MD)	 <p>SIDE TENON MOUNT <i>Dimensions: 2 3/8" dia. x 5" long</i></p> <p>ST1 - Single Head ST2180 - 2 Heads at 180 ST290 - 2 Heads at 90 ST390 - 3 Heads at 90 ST490 - 4 Heads at 90</p>	<p><i>For Powder Coated, please select Colour from next column</i></p>		
25 (MD)	 <p>DRILL PATTERN DP1 - Single Head DP2180 - 2 Heads at 180 DP290 - 2 Heads at 90 DP390 - 3 Heads at 90 DP490 - 4 Heads at 90</p> <p>N - None</p>			
Height	Mounting	Finish Type	PC Colour	Options
NSSA5				

Pole Type Wall Thickness: LD = 0.125", MD = 0.188", HD = 0.250"

Sample Catalogue #: NSSA518MD-ST1-PC-BLK-HHSS-BA1

Note 1: Please provide fixture cutsheet.

Note 2: Please provide basket weight, arm length and mounting height.

Note 3: Please provide banner size and mounting height.

Reset Order Entry Form