

Shafts, Arms and Extensions

SHAFTS

Part Number	Description	Hwy. SN	Height (m)	Reach (m)	Weight (kg)	Bolt Square (mm)	BcD (mm)	Anchor Bolt Diameter (mm) DYWIDAG
102-75-400669-F1	Type 6 Shaft	1829	6.9	-	412	243	343	25 x 28
102-75-400762-F1	Type 7 Shaft	1813A	6.9	2.5	465	243	343	25 x 28

SIGNAL ARMS

Part Number	Description	Hwy. SN	Reach (m)	Weight (kg)	Bolt Square (mm)	BcD (mm)	Bolt Diameter (mm)
102-75-30063C-F1	Type 3C Signal Arm	1836	1.8	18	121	171	16 (5/8")
102-75-30103A-F1	Type 3A Signal Arm	1834	3.0	27	121	171	16 (5/8")
102-75-30143D-F1	Type 3D Signal Arm	1837	4.3	54	121	171	16 (5/8")
102-75-30183E-F1	Type 3E Signal Arm	1838	5.5	68	121	171	16 (5/8")
102-75-30103F-F1	Type 3F Signal Arm	1836A	0.3 - 3.0	9/m	121	171	16 (5/8")

EXTENSIONS

Part Number	Description	Hwy. SN	Reach (m)	Weight (kg)	Bolt Square (mm)	BcD (mm)	Bolt Diameter (mm)
102-75-20027A-F1	Type 7A Extension	1890A	0.25	20	172	243	25 (1")
102-75-20187B-F1	Type 7B Extension	1890B	1.8	69	172	243	25 (1")
102-75-20257C-F1	Type 7C Extension	1890C	2.5	86	172	243	25 (1")
102-75-20487D-F1	Type 7D Extension	1890D	4.8	154	172	243	25 (1")

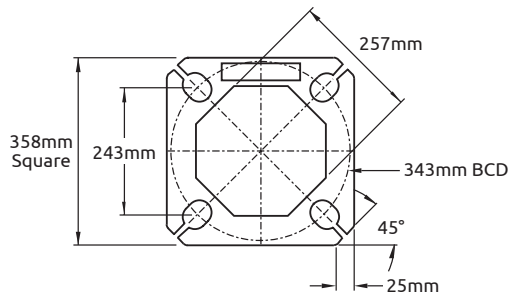
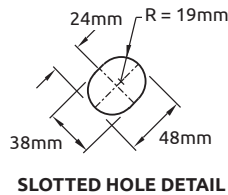
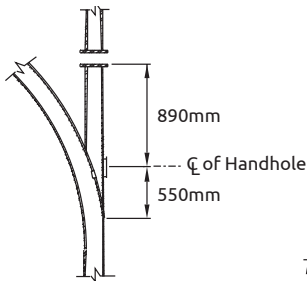
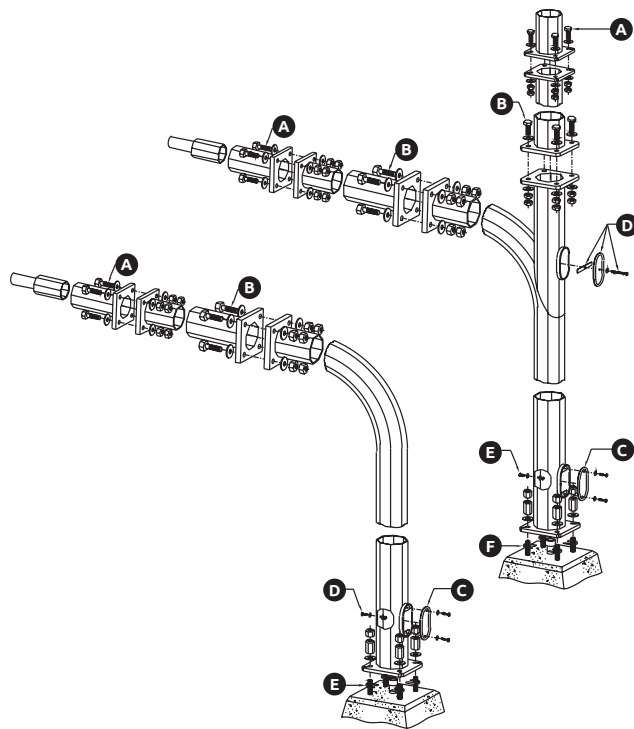
SIGN ARMS

Part Number	Description	Hwy. SN	Reach (m)	Weight (kg)	Bolt Square (mm)	BcD (mm)	Bolt Diameter (mm)
102-75-30LA12-F1	Type LSA Sign Arm	2095	1.2	22	120	170	16 (5/8")

DAVITS

Part Number	Description	Hwy. SN	Height (m)	Reach (m)	Weight (kg)	Bolt Square (mm)	BcD (mm)	Bolt Diameter (mm)
102-75-60102A-F1	Type 2A Davit Arm	1832	2.5	2.5	35	121	171	16 (5/8")
102-75-60202C-F1	Type 2C Double Davit Arm	1833	2.5	2.5/2.5	65	121	171	16 (5/8")

Shafts, Arms and Extensions



BASE PLATE - PLAN VIEW
 For Type 6 and 7 Shafts

