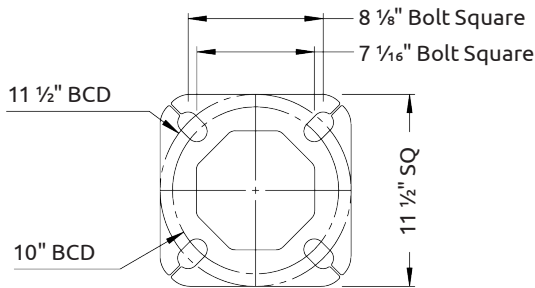
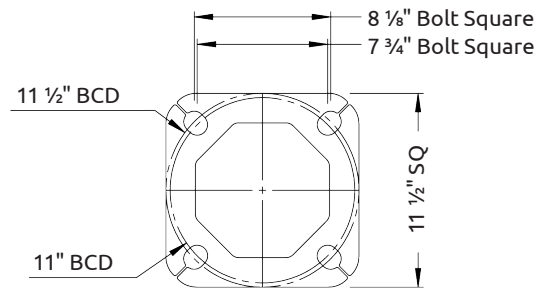


Straight Octagonal Tapered Steel



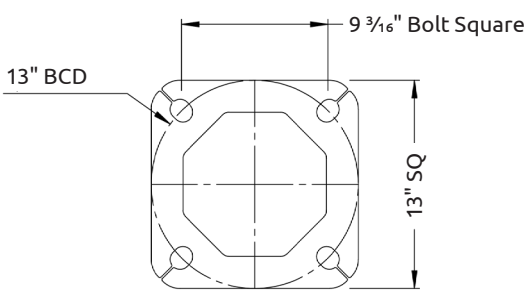
NST Type A

(1" Anchor Bolts)



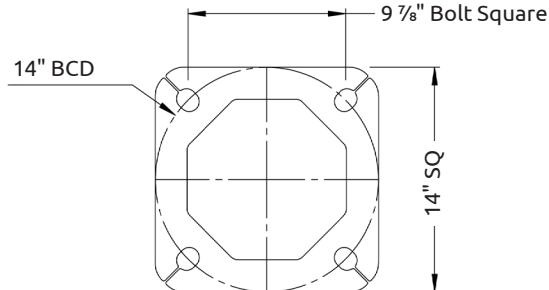
NST Type B

(1" Anchor Bolts)



NST Type C

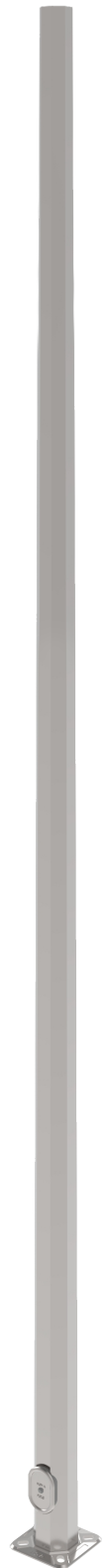
(1" Anchor Bolts)



NST Type D


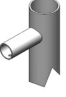

(1" Anchor Bolts)

- Hand hole ring mounting height is 12" to centre and comes with (4"x7") hand hole cover
- Wind speeds (mph) in the table denote the maximum wind gust speed at the project site (i.e. gust factor included).
- Maximum EPA rating includes fixture(s) and supporting arm(s) and is for standard pole installation on concrete bases/footings.
- All poles are supplied with nut covers, shims and top plastic cap.
- Pole designs based on AASHTO Standard Specifications for Structural Supports for Highway Signs, Luminaires, and Traffic Signals.
- Contact Sales Team for custom sizes and/or applications.
- Specific information and details may be subject to change without notice.
- Please see [Warranty](#) and [Terms & Conditions](#).



CATALOGUE #		FIXTURE INFO
PROJECT NAME		
CITY		
PREPARED BY	DATE	
COMMENTS		
		QUANTITY
		EPA (sq.ft.)
		WEIGHT (lbs)

Catalogue #	Pole Height (ft)	Pole Weight (lbs)	Anchor Bolt Diameter (in)	Base Plate Type	Maximum EPA (sq.ft.)			
					80MPH	90MPH	100MPH	110MPH
NST12	12	109	1	A	61.5	48.5	39.0	32.0
NST15	15	130	1	A	48.5	38.5	31.0	25.0
NST18	18	151	1	A	38.5	30.5	24.0	19.5
NST20	20	165	1	A	33.5	26.0	20.5	16.5
NST25	25	200	1	A	24.0	18.5	14.0	11.0
NST30	30	255	1	B	23.5	17.5	13.5	10.0
NST35	35	292	1	B	17.5	12.5	9.0	6.5
NST40	40	365	1	C	18.0	13.0	9.0	6.0
NST40HD	40	440	1	D	27.0	20.0	15.0	11.0

Order Entry Info					
HEIGHT (ft)	MOUNTING TYPE <i>(See Note 1)</i>	FINISH TYPE	PC COLOUR	OPTIONS <i>(Click descriptions to view product)</i>	
12	 TOP TENON MOUNT TT238 - 2 3/8" x 5" tenon TT278 - 2 7/8" x 5" tenon TT350 - 3 1/2" x 5" tenon	PC - Powder Coated	WHT - White (RAL-9003)	<input type="checkbox"/> DUPR - 1110 Box Provision (Festoon Box) <input type="checkbox"/> DUPRGFI - 1110 Box Provision c/w 15A 120V GFI Receptacle and Weatherproof Cover <input type="checkbox"/> HHSS - Hand Hole Security System <input type="checkbox"/> FBA1 - Flower Basket Arm One Side <i>(See Note 2)</i> <input type="checkbox"/> FBA2 - Flower Basket Arm Dual <i>(See Note 2)</i> <input type="checkbox"/> BA1 - Banner Arms One Side <i>(See Note 3)</i> <input type="checkbox"/> BA2 - Banner Arms Dual <i>(See Note 3)</i> <input type="checkbox"/> AB - Anchor Bolts <input type="checkbox"/> BH - Bullhorns <input type="checkbox"/> N - None	
15		 SIDE TENON MOUNT <i>Dimensions: 2 3/8" dia. x 5" long</i> ST1 - Single Head ST2180 - 2 Heads at 180 ST290 - 2 Heads at 90 ST390 - 3 Heads at 90 ST3120 - 3 Heads at 120 ST490 - 4 Heads at 90	NTPC - Nova Tuff Powder Coated <i>(Colour Chart)</i>		BLK - Black (BK50)
18	 DRILL PATTERN DP1 - Single Head DP2180 - 2 Heads at 180 DP290 - 2 Heads at 90 DP390 - 3 Heads at 90 DP3120 - 3 Heads at 120 DP490 - 4 Heads at 90		GALV - Galvanized		DBZ - Dark Bronze (RAL-8019)
20			GALVPC - Galvanized and Powder Coated		GRY - Grey (RAL-7040)
25	N - None		GALVNT - Galvanized and Nova Tuff Powder Coated		GRN - Green (RAL-6005)
30			CC - Custom Colour (RAL-) <i>(Additional charges may apply)</i>		
35		<i>For PC or GALVPC, please select Colour from next column</i>	N - None		
40		<i>For Nova Tuff, please provide RAL# under CC</i>			
40HD					
Height	Mounting	Finish Type	PC Colour		Options
NST					

Note 1: Please provide fixture cutsheet.

Note 2: Please provide basket weight, arm length and mounting height.

Note 3: Please provide banner size and mounting height.

Sample Catalogue #: NST20-ST1-GALVPC-BLK-HHSS-BA1

Reset Order Entry Form